

From: [Norman, Kate](#)
To: [Richard Hannan](#); [Ren Lohofener](#)
Cc: [Mary Grim](#); [Theresa Rabot](#)
Subject: GRSG 2015 - EOC presentation for 1/6/2015 conf. call
Date: Monday, January 05, 2015 4:49:31 PM
Attachments: [20150109_WAFWA_GRSG2015Overview.pptx](#)

In preparation for the conference call tomorrow morning, please find attached the draft EOC presentation.

This is also available on the [SharePoint](#).

Thank you,
K

--

Kate Norman, Sage-Grouse Project Manager
U.S. Fish and Wildlife Service, Region 6
134 Union Blvd, Lakewood CO 80228
PO Box 25486, DFC, Mailstop 60120, Denver CO 80225
Office: 303-236-4214
Mobile: 703-927-2445
kate_norman@fws.gov



Greater Sage-Grouse 2015 Status Review

January 9, 2015

Goals for today:

Understand the process for completing the 2015 greater sage-grouse status review

- Timing and the omnibus rider
- Information and Data Collection
- Analysis
- Determination
- Timeline



What the rider means:

The Service cannot use funds to write or issue:

- A proposed rule for greater sage-grouse; A proposed rule for Columbia Basin

The Service Will:

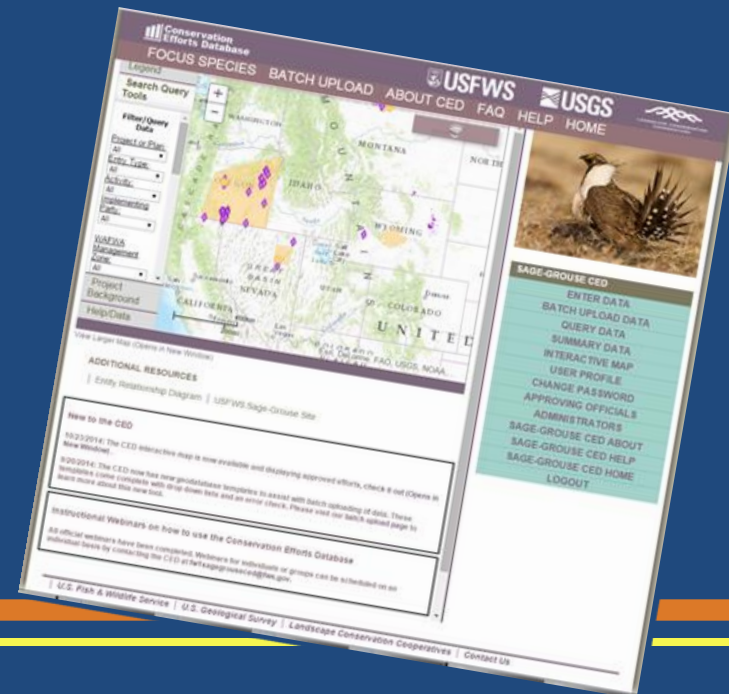
- Determine by Sept. 30, 2015, if the species still warrants protection under the ESA
- Continue to develop, implement, and analyze conservation efforts to support the species.



Information Collection:

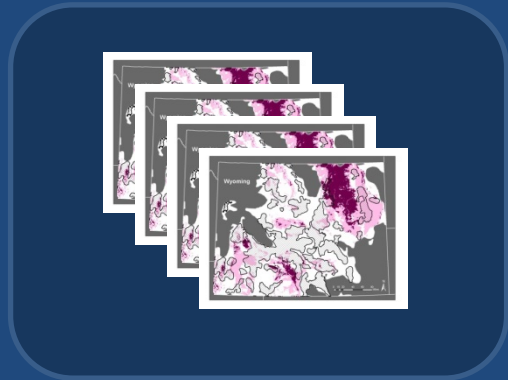
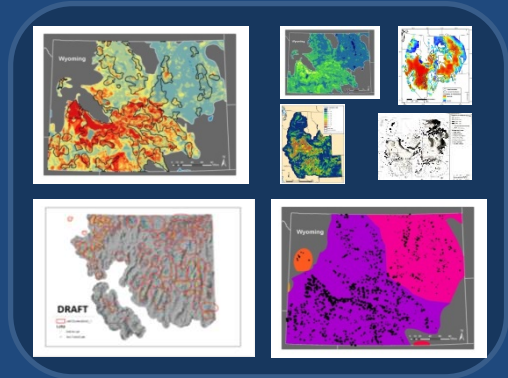
The Conservation Efforts Database

- We'd like your information as soon as possible.
- If you have questions, please contact either:
 - **Kathy Hollar**
Kathy_Hollar@fws.gov
503-231-6156
 - **Lief Wiechman** at
Lief_Wiechman@fws.gov
307-772-2374, x236



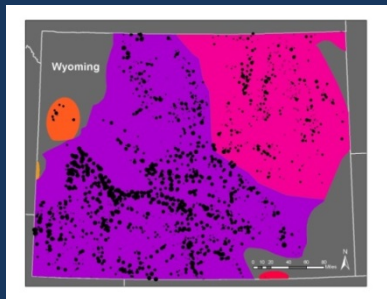
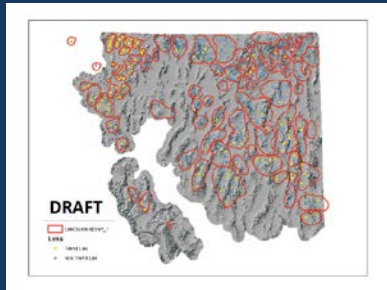
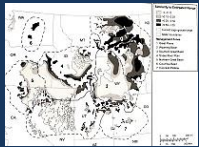
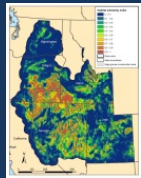
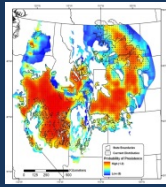
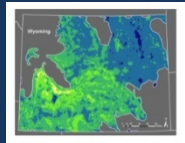
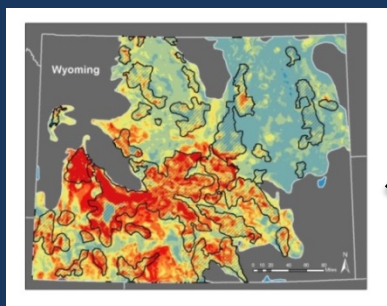
Modeling:

- 7 population models
 - abundance
 - distribution
 - trends
- 4 threat models
 - oil & gas
 - fire & invasives
 - cropland risk
 - conifer
- Projects and analyses remain independent



**Please See Handout for full list of models*





Integrate through
spatial overlap
with 4 Risk Models

Projected Relative
Abundance

Projected Distribution

Projected Population
Trends

Current Population
Trend recent period

Species Report:

Summary of the Scientific Data

- Does not contain policy
- Does not determine species status

Timing

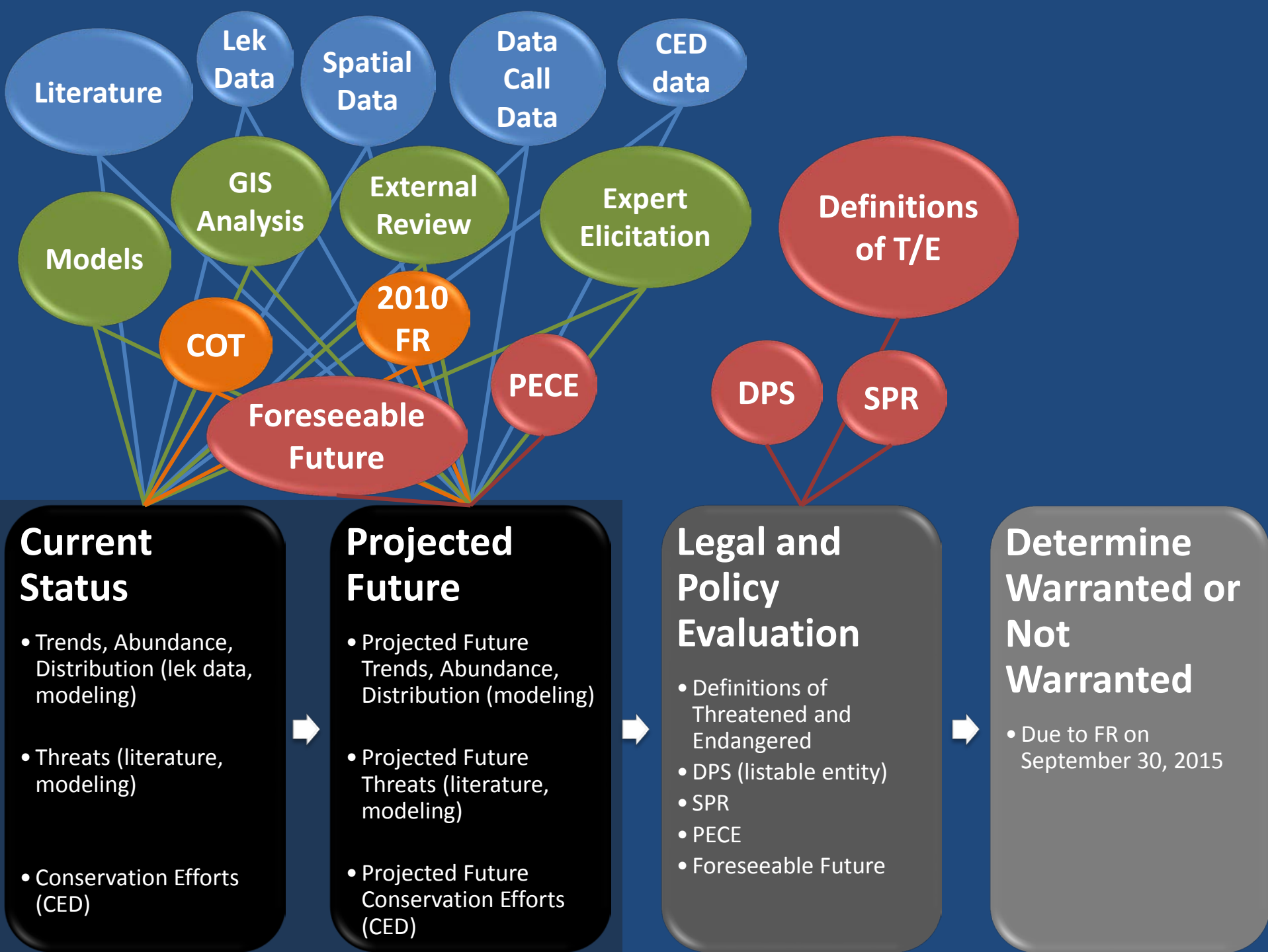
- Qualitative (currently underway)
- GIS Analysis (started, but will require CED data)
- Modeled Chapters (background started)



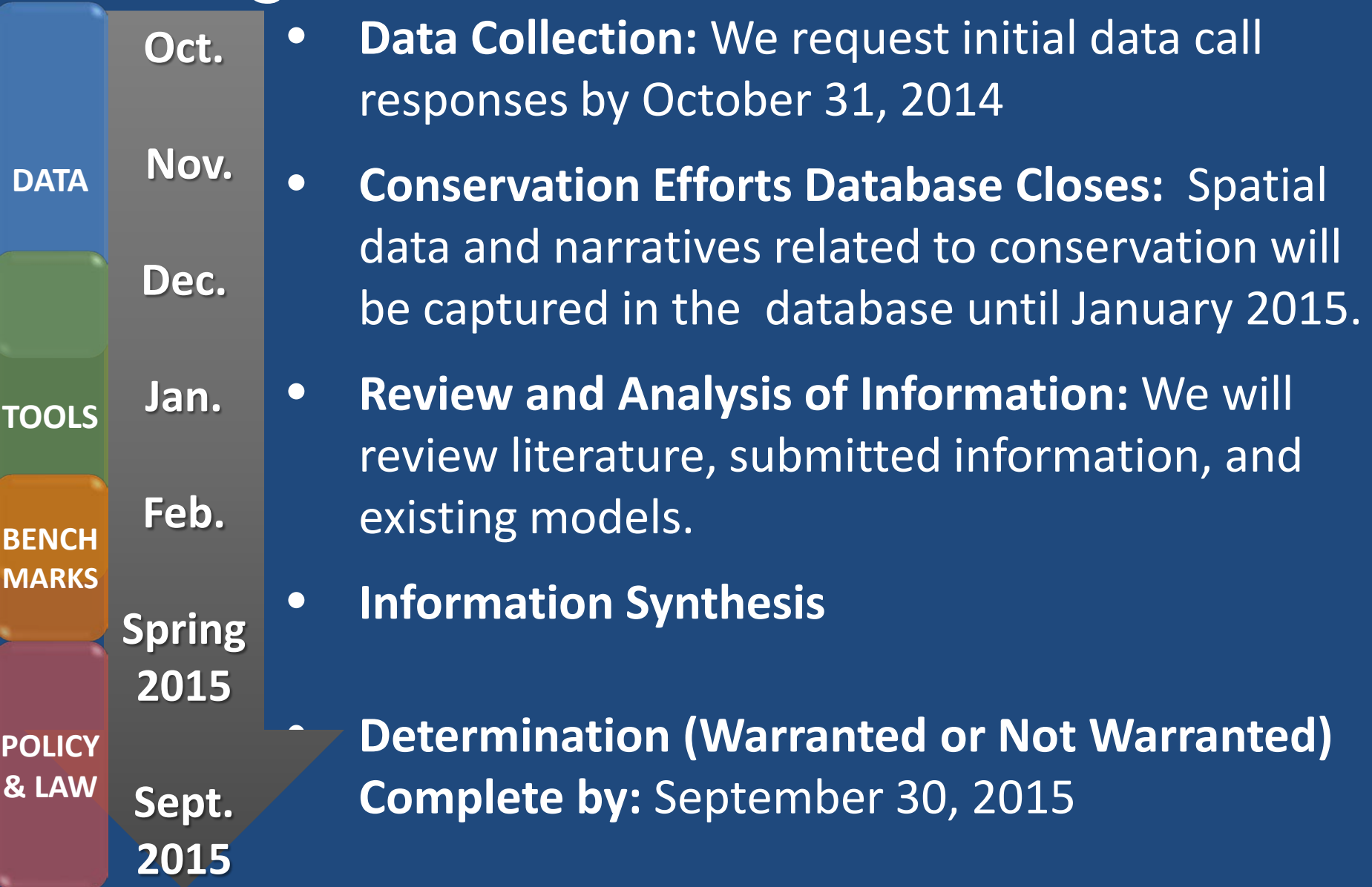
Status Review Process

- **Evaluate Current Status**
 - Trends, Abundance, Distribution
 - Threats
 - Conservation Efforts
- **Evaluate Future Status**
 - Projected Trends, Abundance, Distribution
 - Projected Threats
 - Projected Conservation Efforts
- **Legal and Policy Evaluation of Data**
- **Publication of Federal Register Notice**





Timing



Questions



For more information on the greater sage-grouse, please visit our national sage-grouse website.

<https://www.fws.gov/greatersagegrouse/>

